

IN FOCUS

MARTIN LUTHER COLLEGE

Dear friends and fellow believers,

The apostle Paul makes Easter Sunday intimately personal for each believer. He writes to the church in Ephesus about an amazing reality we sinners sometimes forget. *I pray also that the eyes of your heart may be enlightened in order that you may know . . . his incomparably great power for us who believe. That power is like the working of his mighty strength, which he exerted in Christ when he raised him from the dead and seated him at his right hand in the heavenly realms* (Ephesians 1:18-20).

For Christ's sake, the Father unleashes resurrection power in your heart and mine. Awesome power. Power that covered sin, defeated the devil, and destroyed death! The Spirit of wisdom and revelation unleashes that same power upon us. In Christ's resurrection we have power to crucify the sinful nature with its passions and desires. We have power to endure hardship like a good soldier of Christ Jesus. We have power to give an answer to everyone who asks us about the hope we have.

The reason is Easter: Christ's victory power is in our hearts and in our lives. And it becomes evident to all—and especially self—that when I am weak, then he is strong.

May we continue to proclaim to ourselves and others: He is risen! He is risen indeed! And may our Lord Jesus and his Spirit guide our conventions, providing wisdom and power for the gospel efforts in each of our 12 districts.



In Christ,
Rev. Mark Zarling

**Check Out
Your District on Pages 4-15**

FOCUS on FACULTY

Retiring summer 2018



Prof. Lance Hartzell
DMLC '71

Professor of education & art
DMLC 1993-1995;
MLC 1995-2018



**Instructor
Jeneane Thiesfeldt**
DMLC '74

Piano & organ instructor
MLC 2001-2018

Celebrating ministry anniversaries

- **Prof. Ron Ohm DMLC '78:**
40 years
- **Prof. Cindy Whaley DMLC '76:**
40 years
- **Prof. Larry Lotito:** 25 years

Joining our faculty in 2018-19

- **Darrell Berg DMLC '88**
(education & art)
- **Catherine St. John '13**
(lead preschool teacher)
- **Alan Uher DMLC '87** (education)

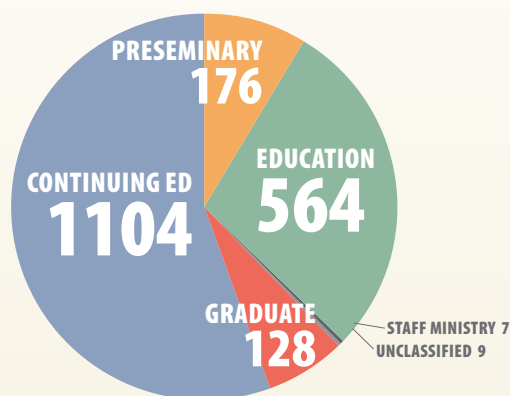
Calls yet to be filled for 2018-19

- Professor of special education
- Professor of theology and foreign language
- Professor of theology

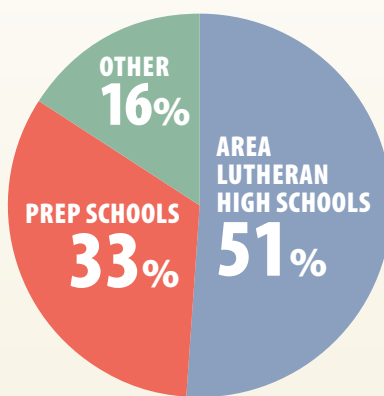
In memoriam

- **Prof. Howard Wessel 1933-2017**
- **Prof. Theodore Hartwig 1921-2017**
- **Prof. Arnold Koelpin 1931-2017**
- **Prof. Alan Spurgin 1949-2018**

ENROLLMENT: 1988



UNDERGRAD STUDENTS BY HIGH SCHOOL



OUR FIRST-YEARS

40 High Schools
21 States
4 Countries

3.46 Average HS GPA
24.3 Average ACT



TUITION, ROOM & BOARD

2016 Tuition \$13,980
2017 Room & Board \$5,510
2017 Total \$19,490

2017 Tuition \$14,680
2018 Room & Board \$5,790
2018 Total \$20,470

2018 Tuition \$15,410
2019 Room & Board \$6,080
2019 Total \$21,490



ATHLETICS

1/3 Play NCAA D3 athletics
3/5 Play intramurals

9 of 16

D3 UMAC sports where MLC led in team GPA

- 3.82** women's volleyball
- 3.78** women's cross country
- 3.76** women's tennis
- 3.73** women's soccer
- 3.69** women's softball
- 3.57** women's basketball
- 3.36** men's tennis
- 3.35** men's soccer
- 3.08** men's baseball

EMERGENCY TEACHERS

6 Seniors filled emergency calls

MUSIC

1/2 Students took piano or organ lessons



1/20 Played in wind symphony

1/3 Sang in a choir

1/7 Participated in fall musical

FINANCIAL AID

\$2.2 Million institutional aid given



95% Students received scholarships, grants, loans, and/or work-study funds from MLC



RESIDENTIAL LIFE

4 Residence halls **98%** Students live on campus

35+ Students compelled to live in New Ulm homes next year due to campus housing shortage

VISITING LUTHER LANDS



96 Alumni tour participants

RECRUITMENT

ON CAMPUS

730 HS students attended Focus on Ministry weekends on campus

OFF CAMPUS

1,000s HS students visited by admissions counselors

CONGREGATIONAL PARTNER GRANT PROGRAM

\$400,000 Awarded

242 Students receiving grants

146 Participating congregations

NOON, & KNIGHT

GRADUATES

DEC 2017 **13** Education

MAY 2018 **109** Education

36 Preseminary

30 Master of Science

Note: **23 graduates (14 education & 9 preseminary)** have opted to teach abroad following graduation

STAFF MINISTRY

25 25-Year anniversary of program

NCAA SPOTLIGHT

1 2018 UMAC Female Scholar-Athlete Leadership Award – given to MLC volleyball player **Kira Grev**

4 Seasons Kira won First Team All-UMAC and Academic All-UMAC honors

1,000+ Kills and hits by Kira



DAYLIGHT USA MINISTRY ASSISTANCE

81 Students participated

38 Congregations received assistance

17 States & territories served



Strategic Plan Goal:

100% MLC student participation in Daylight USA

CONTINUING ED

1104 Students (mostly called workers) served

114 Courses (on campus, online, and on location)

GRADUATE STUDIES

13 Years in existence

3 Degrees offered

- MS-Education (instruction, leadership, special ed, and ed tech emphases)
- MS-Educational Administration (principal & EC director tracks)
- MA-Theological Studies

115 Degrees granted

128 Students

40 Courses

41 Professors (10 MLC & 31 adjunct)



MLC 2017-18 "BEST COLLEGE FOR YOUR MONEY"

BACHELOR OF ART & SCIENCE

#1 in Minnesota Best College for Your Money



#3 in America Best Value



MASTER OF SCIENCE IN EDUCATION

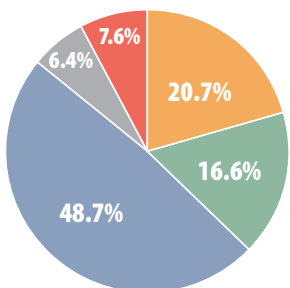
#1 in America Best Value



#3 in America Most Affordable



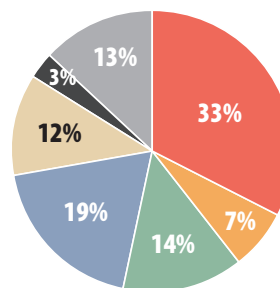
WHERE DOES THE MONEY COME FROM?



FY 2016-2017*

Synod support (WELS/MLC)	20.7%
Gifts and bequests	16.6%
Tuition	48.7%
Government student aid	6.4%
Other	7.6%

WHERE DOES THE MONEY GO?



FY 2016-2017*

Instruction	33%
Instructional Support	7%
Student Services	14%
Environmental Services	19%
General and Administrative	12%
Mission Advancement	3%
Auxiliary Enterprises	13%

TOTAL BUDGET = \$20 MILLION

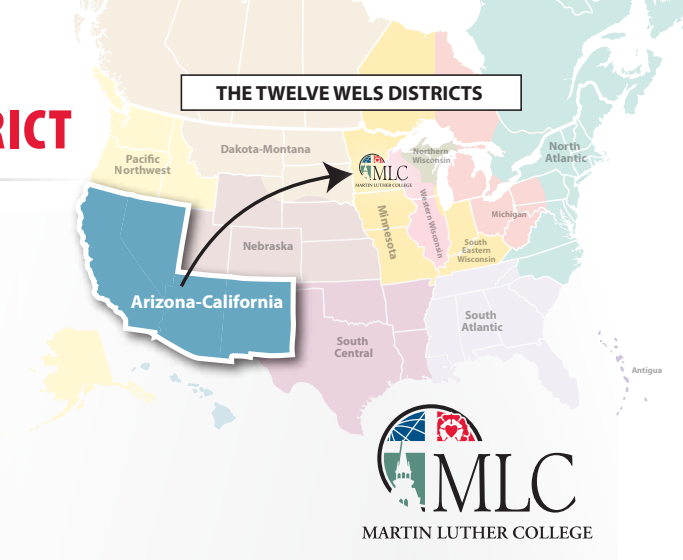
*2017-2018 Figures not yet available.

FOCUS on ARIZONA-CALIFORNIA DISTRICT

First-Year Academic Standout



Sara Wentzel
(Arizona Lutheran Academy)
HS Valedictorian



YOUR MAY 2018 GRADUATES

- 4 Education
- 3 Preseminary

HS VISITORS TO MLC

- California LHS: 10
- Arizona Lutheran Academy: 4

CONGREGATIONS SERVED BY MLC'S DAYLIGHT USA

- Beautiful Savior-Carlsbad CA
- Beautiful Savior-Las Vegas
- Gloria Dei-Belmont CA
- Peace-Queen Creek AZ
- River of Life-Goodyear AZ
- St. Mark-Citrus Heights CA
- St. Peter-Modesto CA

YOUR MLC GOVERNING BOARD MEMBER

- Steven Rosenbaum DMLC '86



New Campaign: With the permission of WELS Conference of Presidents, we will conduct a two-year capital campaign in conjunction with the 2020 silver anniversary of MLC. The title, "Equipping Christian Witnesses," not only reflects the mission of our institution—to train a corps of Christian witnesses to meet WELS ministry needs—but also the pillars of this campaign:

- **Recruitment:** Pray for more pastors, teachers, and staff ministers, and purposefully identify and encourage young Christians who could serve in these roles.
- **Financial aid:** Support the Congregational Partner Grant Program (CPGP), through which MLC matches congregations' gifts for their enrolled students, dollar for dollar, up to \$1,000 per student every year.
- **Facilities:** Repair and augment campus spaces for ministry training: academics, student life, athletics, and the arts. With the help of two consulting firms, we are prioritizing our facility needs.

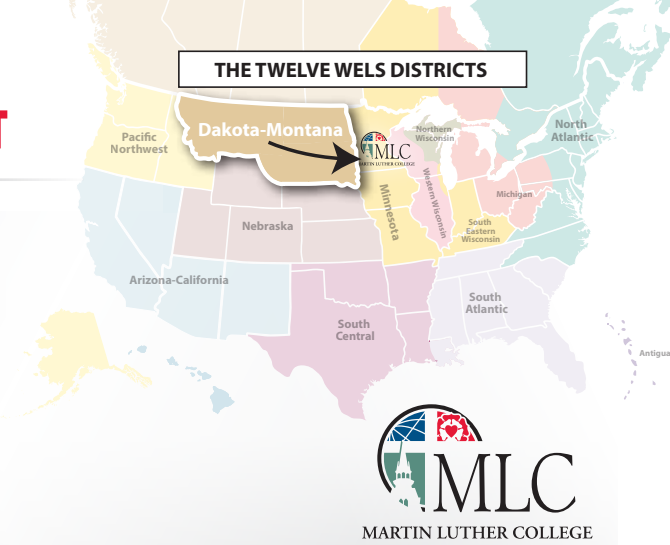
Endless Opportunities: Our Savior Jesus is *not* willing that any should perish. Never before in our synod's history have we seen so many mission opportunities. Hundreds of people all over the world are approaching WELS for scriptural instruction and evangelism assistance. Technology is enabling us to reach countless homes in many different countries with the gospel. And today's young Christians are travelers, eager to take the gospel anywhere in the world.

Deep Needs: We need more workers—not only to fill our vacancies, but also to grasp these new opportunities, to seize the day the Lord has provided us to impact the world with his Word.

Bold Prayers: "Equipping Christian Witnesses" is a celebration of God's goodness—not only for 25 years of MLC ministry, but for more than 150 years of the unconditional gospel in our midst. Pray boldly that we use this celebration to recruit with rigor countless Christian witnesses . . . to increase our financial support of our students . . . and to provide the necessary facilities to equip our students for their future ministries.

MLC InFocus is published by Martin Luther College Mission Advancement Office and is distributed free of charge to students, faculty, staff, alumni, parents, and friends. Owned and operated by the Wisconsin Evangelical Lutheran Synod (WELS), Martin Luther College exists to serve the ministerial needs of the WELS. Comments are welcomed and should be directed to gaugerlf@mlc-wels.edu or Laurie Gauger, *MLC InFocus*, 1995 Luther Court, New Ulm MN 56073.

1-507-354-8221 • mlc-wels.edu



Your May 2018 Graduates



Annalies Brander

Early Childhood Ed & Special Ed



Joshua Busch

Preseminary Studies



Zachary Peterson

Elementary Ed & Secondary PE

HS VISITORS TO MLC

- Great Plains LHS: 9



New Campaign: With the permission of WELS Conference of Presidents, we will conduct a two-year capital campaign in conjunction with the 2020 silver anniversary of MLC. The title, “Equipping Christian Witnesses,” not only reflects the mission of our institution—to train a corps of Christian witnesses to meet WELS ministry needs—but also the pillars of this campaign:

- **Recruitment:** Pray for more pastors, teachers, and staff ministers, and purposefully identify and encourage young Christians who could serve in these roles.
- **Financial aid:** Support the Congregational Partner Grant Program (CPGP), through which MLC matches congregations’ gifts for their enrolled students, dollar for dollar, up to \$1,000 per student every year.
- **Facilities:** Repair and augment campus spaces for ministry training: academics, student life, athletics, and the arts. With the help of two consulting firms, we are prioritizing our facility needs.

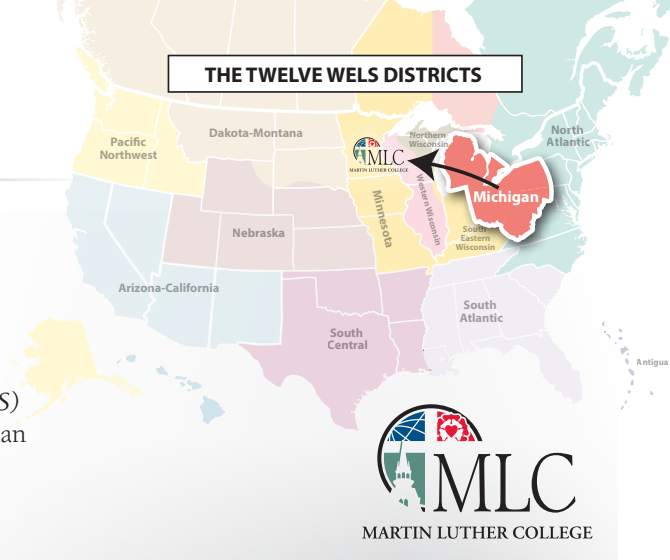
Endless Opportunities: Our Savior Jesus is *not* willing that any should perish. Never before in our synod’s history have we seen so many mission opportunities. Hundreds of people all over the world are approaching WELS for scriptural instruction and evangelism assistance. Technology is enabling us to reach countless homes in many different countries with the gospel. And today’s young Christians are travelers, eager to take the gospel anywhere in the world.

Deep Needs: We need more workers—not only to fill our vacancies, but also to grasp these new opportunities, to seize the day the Lord has provided us to impact the world with his Word.

Bold Prayers: “Equipping Christian Witnesses” is a celebration of God’s goodness—not only for 25 years of MLC ministry, but for more than 150 years of the unconditional gospel in our midst. Pray boldly that we use this celebration to recruit with rigor countless Christian witnesses . . . to increase our financial support of our students . . . and to provide the necessary facilities to equip our students for their future ministries.

MLC InFocus is published by Martin Luther College Mission Advancement Office and is distributed free of charge to students, faculty, staff, alumni, parents, and friends. Owned and operated by the Wisconsin Evangelical Lutheran Synod (WELS), Martin Luther College exists to serve the ministerial needs of the WELS. Comments are welcomed and should be directed to gaugerlf@mlc-wels.edu or Laurie Gauger, *MLC InFocus*, 1995 Luther Court, New Ulm MN 56073.

1-507-354-8221 • mlc-wels.edu



First-Year Academic Standouts



Courtney Ritter
(Michigan LHS)
National Merit Finalist



Julia Kubath
(Michigan LHS)
HS Valedictorian

YOUR MAY 2018 GRADUATES

- 11 Education
- 3 Preseminary

HS VISITORS TO MLC

- Michigan Lutheran Seminary: 64
- Huron Valley LHS: 11
- Michigan LHS: 0

CONGREGATIONS SERVED BY MLC'S DAYLIGHT USA

- Zion-Toledo OH

YOUR MLC GOVERNING BOARD MEMBER

- Michael Krueger



New Campaign: With the permission of WELS Conference of Presidents, we will conduct a two-year capital campaign in conjunction with the 2020 silver anniversary of MLC. The title, "Equipping Christian Witnesses," not only reflects the mission of our institution—to train a corps of Christian witnesses to meet WELS ministry needs—but also the pillars of this campaign:

- **Recruitment:** Pray for more pastors, teachers, and staff ministers, and purposefully identify and encourage young Christians who could serve in these roles.
- **Financial aid:** Support the Congregational Partner Grant Program (CPGP), through which MLC matches congregations' gifts for their enrolled students, dollar for dollar, up to \$1,000 per student every year.
- **Facilities:** Repair and augment campus spaces for ministry training: academics, student life, athletics, and the arts. With the help of two consulting firms, we are prioritizing our facility needs.

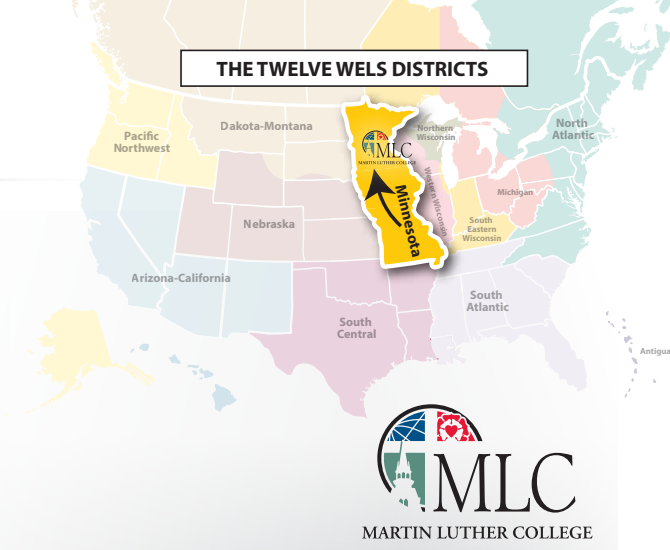
Endless Opportunities: Our Savior Jesus is *not* willing that any should perish. Never before in our synod's history have we seen so many mission opportunities. Hundreds of people all over the world are approaching WELS for scriptural instruction and evangelism assistance. Technology is enabling us to reach countless homes in many different countries with the gospel. And today's young Christians are travelers, eager to take the gospel anywhere in the world.

Deep Needs: We need more workers—not only to fill our vacancies, but also to grasp these new opportunities, to seize the day the Lord has provided us to impact the world with his Word.

Bold Prayers: "Equipping Christian Witnesses" is a celebration of God's goodness—not only for 25 years of MLC ministry, but for more than 150 years of the unconditional gospel in our midst. Pray boldly that we use this celebration to recruit with rigor countless Christian witnesses . . . to increase our financial support of our students . . . and to provide the necessary facilities to equip our students for their future ministries.

MLC InFocus is published by Martin Luther College Mission Advancement Office and is distributed free of charge to students, faculty, staff, alumni, parents, and friends. Owned and operated by the Wisconsin Evangelical Lutheran Synod (WELS), Martin Luther College exists to serve the ministerial needs of the WELS. Comments are welcomed and should be directed to gaugerlf@mlc-wels.edu or Laurie Gauger, *MLC InFocus*, 1995 Luther Court, New Ulm MN 56073.

1-507-354-8221 • mlc-wels.edu



First-Year Academic Standout



Joel Koelpin

(Minnesota Valley LHS)
HS Valedictorian

YOUR MAY 2018 GRADUATES

- 14 Education
- 4 Preseminary

HS VISITORS TO MLC

- St. Croix Lutheran Academy: 55
- Minnesota Valley LHS: 42
- West LHS: 28

CONGREGATIONS SERVED BY MLC'S DAYLIGHT USA

- Brooklyn-Brooklyn Park MN
- Pilgrim-Minneapolis
- True North Campus Ministry-Minneapolis
- WELS Kingdom Workers-New Ulm MN

YOUR MLC GOVERNING BOARD MEMBERS

- Jonathan Brohn WLS '96
- Charles Degner WLS '79 (MN District president)
- Michael Valleau
- Mark Zarling WLS '80 (MLC president)



New Campaign: With the permission of WELS Conference of Presidents, we will conduct a two-year capital campaign in conjunction with the 2020 silver anniversary of MLC. The title, "Equipping Christian Witnesses," not only reflects the mission of our institution—to train a corps of Christian witnesses to meet WELS ministry needs—but also the pillars of this campaign:

- **Recruitment:** Pray for more pastors, teachers, and staff ministers, and purposefully identify and encourage young Christians who could serve in these roles.
- **Financial aid:** Support the Congregational Partner Grant Program (CPGP), through which MLC matches congregations' gifts for their enrolled students, dollar for dollar, up to \$1,000 per student every year.
- **Facilities:** Repair and augment campus spaces for ministry training: academics, student life, athletics, and the arts. With the help of two consulting firms, we are prioritizing our facility needs.

Endless Opportunities: Our Savior Jesus is *not* willing that any should perish. Never before in our synod's history have we seen so many mission opportunities. Hundreds of people all over the world are approaching WELS for scriptural instruction and evangelism assistance. Technology is enabling us to reach countless homes in many different countries with the gospel. And today's young Christians are travelers, eager to take the gospel anywhere in the world.

Deep Needs: We need more workers—not only to fill our vacancies, but also to grasp these new opportunities, to seize the day the Lord has provided us to impact the world with his Word.

Bold Prayers: "Equipping Christian Witnesses" is a celebration of God's goodness—not only for 25 years of MLC ministry, but for more than 150 years of the unconditional gospel in our midst. Pray boldly that we use this celebration to recruit with rigor countless Christian witnesses . . . to increase our financial support of our students . . . and to provide the necessary facilities to equip our students for their future ministries.

MLC InFocus is published by Martin Luther College Mission Advancement Office and is distributed free of charge to students, faculty, staff, alumni, parents, and friends. Owned and operated by the Wisconsin Evangelical Lutheran Synod (WELS), Martin Luther College exists to serve the ministerial needs of the WELS. Comments are welcomed and should be directed to gaugerlf@mlc-wels.edu or Laurie Gauger, *MLC InFocus*, 1995 Luther Court, New Ulm MN 56073.

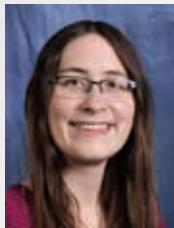
1-507-354-8221 • mlc-wels.edu

Your May 2018 Graduates



Sam Lor

Preseminary Studies



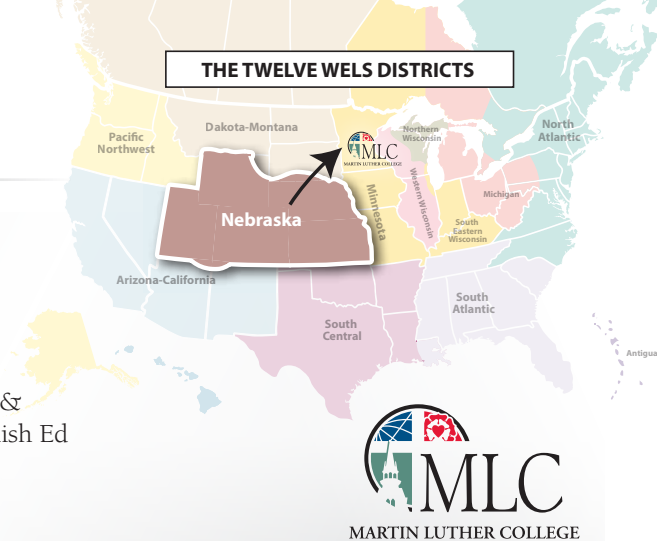
Cortney Manning

Elementary Ed & Secondary English Ed



Nicole Wood

Secondary Spanish Ed



HS VISITORS TO MLC

- Nebraska LHS: 32
- Rocky Mountain LHS: 19

CONGREGATIONS SERVED BY MLC'S DAYLIGHT USA

- Christ-Denver
- Living Word-Montrose CO



New Campaign: With the permission of WELS Conference of Presidents, we will conduct a two-year capital campaign in conjunction with the 2020 silver anniversary of MLC. The title, “Equipping Christian Witnesses,” not only reflects the mission of our institution—to train a corps of Christian witnesses to meet WELS ministry needs—but also the pillars of this campaign:

- **Recruitment:** Pray for more pastors, teachers, and staff ministers, and purposefully identify and encourage young Christians who could serve in these roles.
- **Financial aid:** Support the Congregational Partner Grant Program (CPGP), through which MLC matches congregations’ gifts for their enrolled students, dollar for dollar, up to \$1,000 per student every year.
- **Facilities:** Repair and augment campus spaces for ministry training: academics, student life, athletics, and the arts. With the help of two consulting firms, we are prioritizing our facility needs.

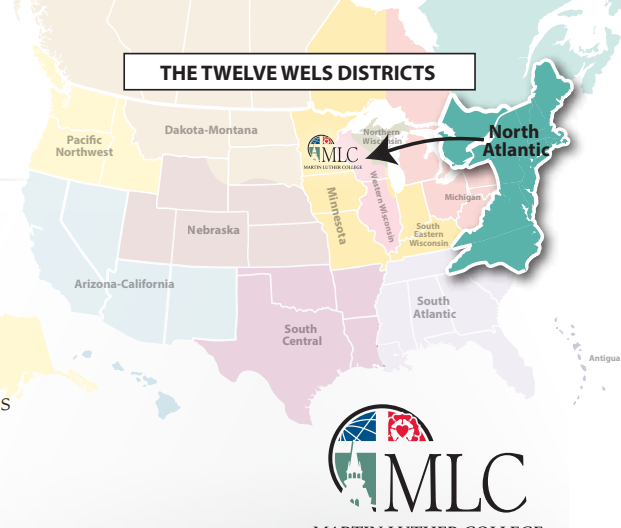
Endless Opportunities: Our Savior Jesus is *not* willing that any should perish. Never before in our synod’s history have we seen so many mission opportunities. Hundreds of people all over the world are approaching WELS for scriptural instruction and evangelism assistance. Technology is enabling us to reach countless homes in many different countries with the gospel. And today’s young Christians are travelers, eager to take the gospel anywhere in the world.

Deep Needs: We need more workers—not only to fill our vacancies, but also to grasp these new opportunities, to seize the day the Lord has provided us to impact the world with his Word.

Bold Prayers: “Equipping Christian Witnesses” is a celebration of God’s goodness—not only for 25 years of MLC ministry, but for more than 150 years of the unconditional gospel in our midst. Pray boldly that we use this celebration to recruit with rigor countless Christian witnesses . . . to increase our financial support of our students . . . and to provide the necessary facilities to equip our students for their future ministries.

MLC InFocus is published by Martin Luther College Mission Advancement Office and is distributed free of charge to students, faculty, staff, alumni, parents, and friends. Owned and operated by the Wisconsin Evangelical Lutheran Synod (WELS), Martin Luther College exists to serve the ministerial needs of the WELS. Comments are welcomed and should be directed to gaugerlf@mlc-wels.edu or Laurie Gauger, *MLC InFocus*, 1995 Luther Court, New Ulm MN 56073.

1-507-354-8221 • mlc-wels.edu



Your May 2018 Graduates



**Sarah
Couture**

Secondary Chemistry
& Life Science Ed



**Carolyn
Hunt**

Educational Studies



**Zachary
Satorius**

Preseminary
Studies



**Justin
Wilkens**

Preseminary
Studies



CONGREGATIONS SERVED BY MLC'S DAYLIGHT USA

- Grace-Charlotte NC
- Grace-Falls Church VA
- Sure Foundation-Queens

YOUR MLC GOVERNING BOARD MEMBER

- Michael Siefert WLS '03 (*vice chair*)



New Campaign: With the permission of WELS Conference of Presidents, we will conduct a two-year capital campaign in conjunction with the 2020 silver anniversary of MLC. The title, "Equipping Christian Witnesses," not only reflects the mission of our institution—to train a corps of Christian witnesses to meet WELS ministry needs—but also the pillars of this campaign:

- **Recruitment:** Pray for more pastors, teachers, and staff ministers, and purposefully identify and encourage young Christians who could serve in these roles.
- **Financial aid:** Support the Congregational Partner Grant Program (CPGP), through which MLC matches congregations' gifts for their enrolled students, dollar for dollar, up to \$1,000 per student every year.
- **Facilities:** Repair and augment campus spaces for ministry training: academics, student life, athletics, and the arts. With the help of two consulting firms, we are prioritizing our facility needs.

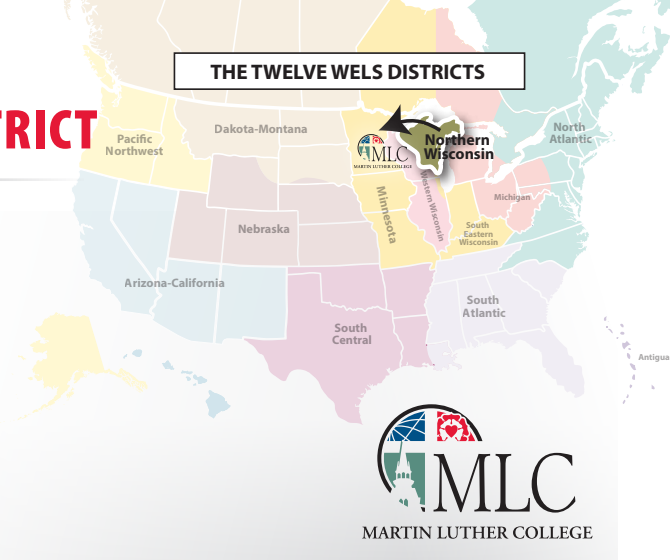
Endless Opportunities: Our Savior Jesus is *not* willing that any should perish. Never before in our synod's history have we seen so many mission opportunities. Hundreds of people all over the world are approaching WELS for scriptural instruction and evangelism assistance. Technology is enabling us to reach countless homes in many different countries with the gospel. And today's young Christians are travelers, eager to take the gospel anywhere in the world.

Deep Needs: We need more workers—not only to fill our vacancies, but also to grasp these new opportunities, to seize the day the Lord has provided us to impact the world with his Word.

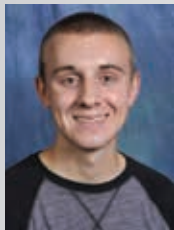
Bold Prayers: "Equipping Christian Witnesses" is a celebration of God's goodness—not only for 25 years of MLC ministry, but for more than 150 years of the unconditional gospel in our midst. Pray boldly that we use this celebration to recruit with rigor countless Christian witnesses . . . to increase our financial support of our students . . . and to provide the necessary facilities to equip our students for their future ministries.

MLC InFocus is published by Martin Luther College Mission Advancement Office and is distributed free of charge to students, faculty, staff, alumni, parents, and friends. Owned and operated by the Wisconsin Evangelical Lutheran Synod (WELS), Martin Luther College exists to serve the ministerial needs of the WELS. Comments are welcomed and should be directed to gaugerlf@mlc-wels.edu or Laurie Gauger, *MLC InFocus*, 1995 Luther Court, New Ulm MN 56073.

1-507-354-8221 • mlc-wels.edu



First-Year Academic Standout



Noah Melso

(Manitowoc LHS)
HS Valedictorian

YOUR MAY 2018 GRADUATES

- 20 Education
- 7 Preseminary

HS VISITORS TO MLC

- Fox Valley LHS: 34
- Winnebago Lutheran Academy: 29
- Manitowoc LHS: 27

CONGREGATIONS SERVED BY MLC'S DAYLIGHT USA

- St. John-Sturgeon Bay WI
- St. Paul-Algoma WI

YOUR MLC GOVERNING BOARD MEMBERS

- David Uhlhorn '99
- Dale Krause



New Campaign: With the permission of WELS Conference of Presidents, we will conduct a two-year capital campaign in conjunction with the 2020 silver anniversary of MLC. The title, "Equipping Christian Witnesses," not only reflects the mission of our institution—to train a corps of Christian witnesses to meet WELS ministry needs—but also the pillars of this campaign:

- **Recruitment:** Pray for more pastors, teachers, and staff ministers, and purposefully identify and encourage young Christians who could serve in these roles.
- **Financial aid:** Support the Congregational Partner Grant Program (CPGP), through which MLC matches congregations' gifts for their enrolled students, dollar for dollar, up to \$1,000 per student every year.
- **Facilities:** Repair and augment campus spaces for ministry training: academics, student life, athletics, and the arts. With the help of two consulting firms, we are prioritizing our facility needs.

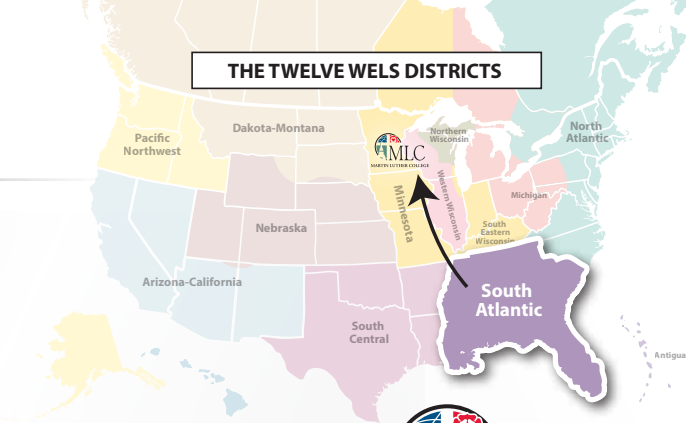
Endless Opportunities: Our Savior Jesus is *not* willing that any should perish. Never before in our synod's history have we seen so many mission opportunities. Hundreds of people all over the world are approaching WELS for scriptural instruction and evangelism assistance. Technology is enabling us to reach countless homes in many different countries with the gospel. And today's young Christians are travelers, eager to take the gospel anywhere in the world.

Deep Needs: We need more workers—not only to fill our vacancies, but also to grasp these new opportunities, to seize the day the Lord has provided us to impact the world with his Word.

Bold Prayers: "Equipping Christian Witnesses" is a celebration of God's goodness—not only for 25 years of MLC ministry, but for more than 150 years of the unconditional gospel in our midst. Pray boldly that we use this celebration to recruit with rigor countless Christian witnesses . . . to increase our financial support of our students . . . and to provide the necessary facilities to equip our students for their future ministries.

MLC InFocus is published by Martin Luther College Mission Advancement Office and is distributed free of charge to students, faculty, staff, alumni, parents, and friends. Owned and operated by the Wisconsin Evangelical Lutheran Synod (WELS), Martin Luther College exists to serve the ministerial needs of the WELS. Comments are welcomed and should be directed to gaugerlf@mlc-wels.edu or Laurie Gauger, *MLC InFocus*, 1995 Luther Court, New Ulm MN 56073.

1-507-354-8221 • mlc-wels.edu



THE TWELVE WELS DISTRICTS

Your May 2018 Graduates



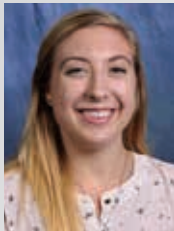
Tassia-Channel Clement

Elementary Ed



Joseph Kasper

Preseminary Studies



Caroline Madson

Elementary Ed



Thomas Welch

Preseminary Studies

First-Year Academic Standout



Sofia Spiegelberg

(Luther Preparatory School)
HS Valedictorian



HS VISITORS TO MLC

- Divine Savior Academy: 6

CONGREGATIONS SERVED BY MLC'S DAYLIGHT USA:

- Abiding Faith-Smyrna TN
- Abiding Grace-Covington GA
- Christ Our Savior-Columbia TN
- Hope-Irmo SC
- Intown-Atlanta
- Living Word-Gray TN
- Mi Dios Verdadero-San Juan, Puerto Rico
- New Mission-Ooltewah TN
- Risen Savior-Lakewood Ranch FL
- St. Paul-Beverly Hills FL



New Campaign: With the permission of WELS Conference of Presidents, we will conduct a two-year capital campaign in conjunction with the 2020 silver anniversary of MLC. The title, "Equipping Christian Witnesses," not only reflects the mission of our institution—to train a corps of Christian witnesses to meet WELS ministry needs—but also the pillars of this campaign:

- **Recruitment:** Pray for more pastors, teachers, and staff ministers, and purposefully identify and encourage young Christians who could serve in these roles.
- **Financial aid:** Support the Congregational Partner Grant Program (CPGP), through which MLC matches congregations' gifts for their enrolled students, dollar for dollar, up to \$1,000 per student every year.
- **Facilities:** Repair and augment campus spaces for ministry training: academics, student life, athletics, and the arts. With the help of two consulting firms, we are prioritizing our facility needs.

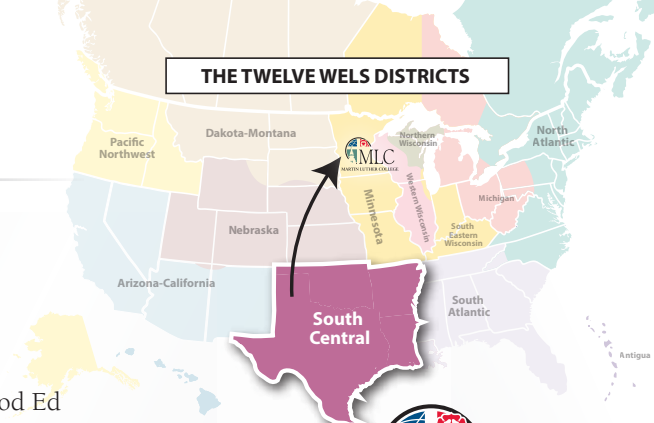
Endless Opportunities: Our Savior Jesus is *not* willing that any should perish. Never before in our synod's history have we seen so many mission opportunities. Hundreds of people all over the world are approaching WELS for scriptural instruction and evangelism assistance. Technology is enabling us to reach countless homes in many different countries with the gospel. And today's young Christians are travelers, eager to take the gospel anywhere in the world.

Deep Needs: We need more workers—not only to fill our vacancies, but also to grasp these new opportunities, to seize the day the Lord has provided us to impact the world with his Word.

Bold Prayers: "Equipping Christian Witnesses" is a celebration of God's goodness—not only for 25 years of MLC ministry, but for more than 150 years of the unconditional gospel in our midst. Pray boldly that we use this celebration to recruit with rigor countless Christian witnesses . . . to increase our financial support of our students . . . and to provide the necessary facilities to equip our students for their future ministries.

MLC InFocus is published by Martin Luther College Mission Advancement Office and is distributed free of charge to students, faculty, staff, alumni, parents, and friends. Owned and operated by the Wisconsin Evangelical Lutheran Synod (WELS), Martin Luther College exists to serve the ministerial needs of the WELS. Comments are welcomed and should be directed to gaugerlf@mlc-wels.edu or Laurie Gauger, *MLC InFocus*, 1995 Luther Court, New Ulm MN 56073.

1-507-354-8221 • mlc-wels.edu



THE TWELVE WELS DISTRICTS

Your May 2018 Graduates



Andrew Carter
Staff Ministry



Megan Fury
Early Childhood Ed



Marah Schneider
Elementary Ed



Justin Steinke
Preseminary Studies



Joshua VonDeylen
Elementary Ed



CONGREGATIONS SERVED BY MLC'S DAYLIGHT USA

- Beautiful Savior-College Station TX

YOUR MLC GOVERNING BOARD MEMBER:

- Andrew Van Weele '04



New Campaign: With the permission of WELS Conference of Presidents, we will conduct a two-year capital campaign in conjunction with the 2020 silver anniversary of MLC. The title, "Equipping Christian Witnesses," not only reflects the mission of our institution—to train a corps of Christian witnesses to meet WELS ministry needs—but also the pillars of this campaign:

- **Recruitment:** Pray for more pastors, teachers, and staff ministers, and purposefully identify and encourage young Christians who could serve in these roles.
- **Financial aid:** Support the Congregational Partner Grant Program (CPGP), through which MLC matches congregations' gifts for their enrolled students, dollar for dollar, up to \$1,000 per student every year.
- **Facilities:** Repair and augment campus spaces for ministry training: academics, student life, athletics, and the arts. With the help of two consulting firms, we are prioritizing our facility needs.

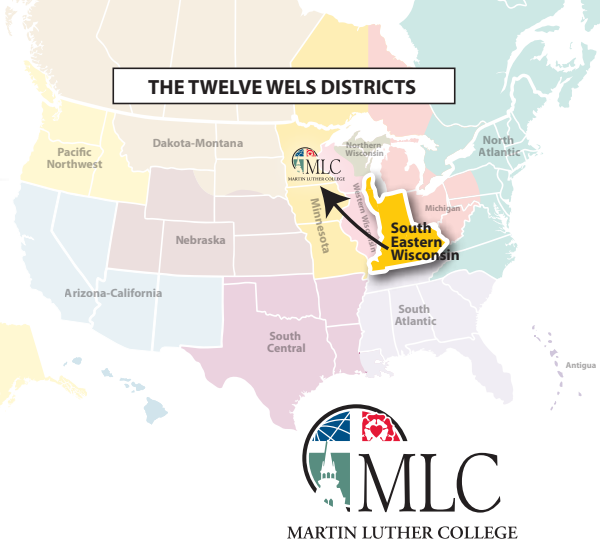
Endless Opportunities: Our Savior Jesus is *not* willing that any should perish. Never before in our synod's history have we seen so many mission opportunities. Hundreds of people all over the world are approaching WELS for scriptural instruction and evangelism assistance. Technology is enabling us to reach countless homes in many different countries with the gospel. And today's young Christians are travelers, eager to take the gospel anywhere in the world.

Deep Needs: We need more workers—not only to fill our vacancies, but also to grasp these new opportunities, to seize the day the Lord has provided us to impact the world with his Word.

Bold Prayers: "Equipping Christian Witnesses" is a celebration of God's goodness—not only for 25 years of MLC ministry, but for more than 150 years of the unconditional gospel in our midst. Pray boldly that we use this celebration to recruit with rigor countless Christian witnesses . . . to increase our financial support of our students . . . and to provide the necessary facilities to equip our students for their future ministries.

MLC InFocus is published by Martin Luther College Mission Advancement Office and is distributed free of charge to students, faculty, staff, alumni, parents, and friends. Owned and operated by the Wisconsin Evangelical Lutheran Synod (WELS), Martin Luther College exists to serve the ministerial needs of the WELS. Comments are welcomed and should be directed to gaugerlf@mlc-wels.edu or Laurie Gauger, *MLC InFocus*, 1995 Luther Court, New Ulm MN 56073.

1-507-354-8221 • mlc-wels.edu



YOUR MAY 2018 GRADUATES

- 17 Education
- 9 Preseminary

HS VISITORS TO MLC

- Wisconsin LHS: 64
- Kettle Moraine LHS: 33 (pictured)
- Illinois LHS: 22
- Shoreland LHS: 21

CONGREGATIONS SERVED BY MLC'S DAYLIGHT USA

- School Chaplaincy-Milwaukee
- Living Word-Waukesha WI

YOUR MLC GOVERNING BOARD MEMBERS

- Joe Archer DMLC '78
- Daniel Leyrer WLS '89
- Randy Matter (*advisory*)
- Paul Prange WLS '88 (*Ministerial Ed administrator*)
- Michael Woldt WLS '81 *chair*



New Campaign: With the permission of WELS Conference of Presidents, we will conduct a two-year capital campaign in conjunction with the 2020 silver anniversary of MLC. The title, "Equipping Christian Witnesses," not only reflects the mission of our institution—to train a corps of Christian witnesses to meet WELS ministry needs—but also the pillars of this campaign:

- **Recruitment:** Pray for more pastors, teachers, and staff ministers, and purposefully identify and encourage young Christians who could serve in these roles.
- **Financial aid:** Support the Congregational Partner Grant Program (CPGP), through which MLC matches congregations' gifts for their enrolled students, dollar for dollar, up to \$1,000 per student every year.
- **Facilities:** Repair and augment campus spaces for ministry training: academics, student life, athletics, and the arts. With the help of two consulting firms, we are prioritizing our facility needs.

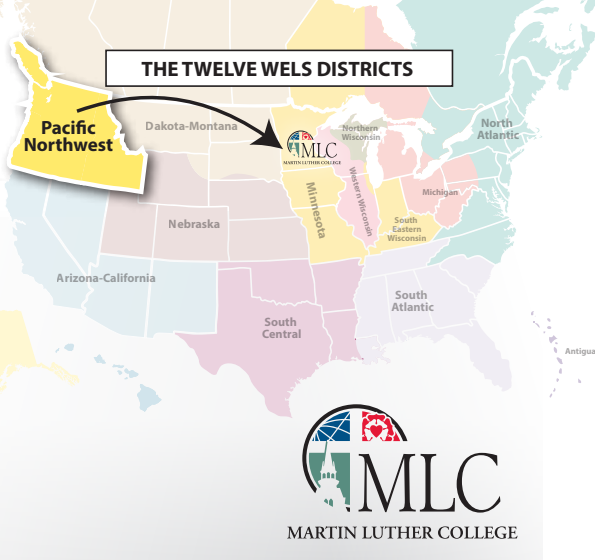
Endless Opportunities: Our Savior Jesus is *not* willing that any should perish. Never before in our synod's history have we seen so many mission opportunities. Hundreds of people all over the world are approaching WELS for scriptural instruction and evangelism assistance. Technology is enabling us to reach countless homes in many different countries with the gospel. And today's young Christians are travelers, eager to take the gospel anywhere in the world.

Deep Needs: We need more workers—not only to fill our vacancies, but also to grasp these new opportunities, to seize the day the Lord has provided us to impact the world with his Word.

Bold Prayers: "Equipping Christian Witnesses" is a celebration of God's goodness—not only for 25 years of MLC ministry, but for more than 150 years of the unconditional gospel in our midst. Pray boldly that we use this celebration to recruit with rigor countless Christian witnesses . . . to increase our financial support of our students . . . and to provide the necessary facilities to equip our students for their future ministries.

MLC InFocus is published by Martin Luther College Mission Advancement Office and is distributed free of charge to students, faculty, staff, alumni, parents, and friends. Owned and operated by the Wisconsin Evangelical Lutheran Synod (WELS), Martin Luther College exists to serve the ministerial needs of the WELS. Comments are welcomed and should be directed to gaugerlf@mlc-wels.edu or Laurie Gauger, *MLC InFocus*, 1995 Luther Court, New Ulm MN 56073.

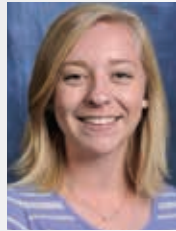
1-507-354-8221 • mlc-wels.edu



Your May 2018 Graduates



John Henning
Secondary PE



Erin Plocher
Elementary Ed

HS VISITORS TO MLC

- Evergreen LHS: 36 (pictured)

CONGREGATIONS SERVED BY MLC'S DAYLIGHT USA

- Messiah-Nampa ID



New Campaign: With the permission of WELS Conference of Presidents, we will conduct a two-year capital campaign in conjunction with the 2020 silver anniversary of MLC. The title, "Equipping Christian Witnesses," not only reflects the mission of our institution—to train a corps of Christian witnesses to meet WELS ministry needs—but also the pillars of this campaign:

- **Recruitment:** Pray for more pastors, teachers, and staff ministers, and purposefully identify and encourage young Christians who could serve in these roles.
- **Financial aid:** Support the Congregational Partner Grant Program (CPGP), through which MLC matches congregations' gifts for their enrolled students, dollar for dollar, up to \$1,000 per student every year.
- **Facilities:** Repair and augment campus spaces for ministry training: academics, student life, athletics, and the arts. With the help of two consulting firms, we are prioritizing our facility needs.

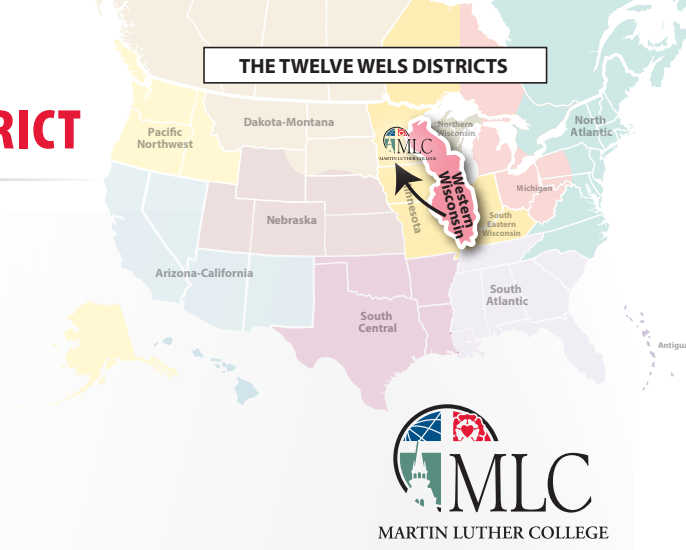
Endless Opportunities: Our Savior Jesus is *not* willing that any should perish. Never before in our synod's history have we seen so many mission opportunities. Hundreds of people all over the world are approaching WELS for scriptural instruction and evangelism assistance. Technology is enabling us to reach countless homes in many different countries with the gospel. And today's young Christians are travelers, eager to take the gospel anywhere in the world.

Deep Needs: We need more workers—not only to fill our vacancies, but also to grasp these new opportunities, to seize the day the Lord has provided us to impact the world with his Word.

Bold Prayers: "Equipping Christian Witnesses" is a celebration of God's goodness—not only for 25 years of MLC ministry, but for more than 150 years of the unconditional gospel in our midst. Pray boldly that we use this celebration to recruit with rigor countless Christian witnesses . . . to increase our financial support of our students . . . and to provide the necessary facilities to equip our students for their future ministries.

MLC InFocus is published by Martin Luther College Mission Advancement Office and is distributed free of charge to students, faculty, staff, alumni, parents, and friends. Owned and operated by the Wisconsin Evangelical Lutheran Synod (WELS), Martin Luther College exists to serve the ministerial needs of the WELS. Comments are welcomed and should be directed to gaugerlf@mlc-wels.edu or Laurie Gauger, *MLC InFocus*, 1995 Luther Court, New Ulm MN 56073.

1-507-354-8221 • mlc-wels.edu



First-Year Academic Standouts



Christopher Walther

(Luther Preparatory School)
HS Valedictorian

YOUR MAY 2018 GRADUATES

- 23 Education
- 3 Preseminary

HS VISITORS TO MLC

- Luther Preparatory School: 102
- Lakeside LHS: 34
- Northland LHS: 31
- Luther HS: 26

CONGREGATIONS SERVED BY MLC'S DAYLIGHT USA

- Bethany-Fort Atkinson WI
- Divine Word-Plover WI
- St. John-Hillpoint WI

YOUR MLC GOVERNING BOARD MEMBERS

- Michael Lindemann WLS '91
- Timothy Petermann
- Mark Schroeder WLS '81 (WELS president)



New Campaign: With the permission of WELS Conference of Presidents, we will conduct a two-year capital campaign in conjunction with the 2020 silver anniversary of MLC. The title, "Equipping Christian Witnesses," not only reflects the mission of our institution—to train a corps of Christian witnesses to meet WELS ministry needs—but also the pillars of this campaign:

- **Recruitment:** Pray for more pastors, teachers, and staff ministers, and purposefully identify and encourage young Christians who could serve in these roles.
- **Financial aid:** Support the Congregational Partner Grant Program (CPGP), through which MLC matches congregations' gifts for their enrolled students, dollar for dollar, up to \$1,000 per student every year.
- **Facilities:** Repair and augment campus spaces for ministry training: academics, student life, athletics, and the arts. With the help of two consulting firms, we are prioritizing our facility needs.

Endless Opportunities: Our Savior Jesus is *not* willing that any should perish. Never before in our synod's history have we seen so many mission opportunities. Hundreds of people all over the world are approaching WELS for scriptural instruction and evangelism assistance. Technology is enabling us to reach countless homes in many different countries with the gospel. And today's young Christians are travelers, eager to take the gospel anywhere in the world.

Deep Needs: We need more workers—not only to fill our vacancies, but also to grasp these new opportunities, to seize the day the Lord has provided us to impact the world with his Word.

Bold Prayers: "Equipping Christian Witnesses" is a celebration of God's goodness—not only for 25 years of MLC ministry, but for more than 150 years of the unconditional gospel in our midst. Pray boldly that we use this celebration to recruit with rigor countless Christian witnesses . . . to increase our financial support of our students . . . and to provide the necessary facilities to equip our students for their future ministries.

MLC InFocus is published by Martin Luther College Mission Advancement Office and is distributed free of charge to students, faculty, staff, alumni, parents, and friends. Owned and operated by the Wisconsin Evangelical Lutheran Synod (WELS), Martin Luther College exists to serve the ministerial needs of the WELS. Comments are welcomed and should be directed to gaugerlf@mlc-wels.edu or Laurie Gauger, *MLC InFocus*, 1995 Luther Court, New Ulm MN 56073.

1-507-354-8221 • mlc-wels.edu